



Trimbelle River  
Headwaters Restoration Project  
“Bring Back the Natives”

PRELIMINARY REPORT 2013  
Kiap-TU-Wish Chapter





contents

From Our Grant Writer 1

Project Status 2

Work Plan 4-6

Revised Budget 7

Maps and Photos 8-11

Board of Directors 12

Dear Friend of Kiap-TU-Wish,

Thank you for assisting us to improve the stream and riparian habitat in the headwater reaches of the Trimbelle River in western Wisconsin. By combining the funding supplied by organizations like yours with our grassroots volunteer efforts, we can accomplish a great deal.

This preliminary report is intended to give you a "snapshot" of where the project stands as of today. The following pages are a synopsis of project activity, challenges and outcomes. We have had delays and setbacks due to uncooperative weather, which can be expected. The WI DNR trout crew has been working diligently to get the project back on track and completed by fall of 2013.

We have been blessed to be able to secure the funding necessary to make this project a reality. And although we were not awarded everything we asked for, some unexpected donations of cash and equipment flowed in to help make this project happen.

You may notice some variances in the amounts and allocations within the enclosed project budget when compared to the original budget in the grant proposal. We plan to send you a more in-depth final project report in December. As we incur expenses, we may realize cost savings in some areas, overages in others. Please keep in mind that this is a fluid process, and have confidence that we will make your dollars work as hard and impactful as we can.

Moving forward we have had interest in continuing restoration work immediately below the current project site, and are gearing up to secure additional funding and resources to make that happen.

Please contact me if you have any questions or concerns regarding this report, and again, our thanks.



Greg Meyer  
Kiap-TU-Wish Board Member  
Trimbelle River Grant Writer

**[Summary]**

Stream restoration work on the Trimbelle River at Pierce County Highway W was originally planned to start in April 2013 with completion in the fall of 2013. Mother Nature had a different plan however. A record wet spring had pushed back any restoration work the WI DNR could start due to unmanageable field conditions. After numerous setbacks, WI DNR was finally able to start in late July of 2013. Our goal is to wrap up this project by the end of September 2013—weather permitting.

The restoration work at the headwaters of the Trimbelle River was started in late July. Heavy equipment has been brought in, and a majority of the rock has been distributed to key locations along the course of the project site. The WI DNR trout crew has started to shape and slope the banks (which helps reduce erosion and helps with flooding), and preparing the site for further restoration. As the stream is narrowed, the velocity has been increasing. The excellent gradient of this stretch is becoming more obvious, with plunge pools being created by John Sours and his WI DNR trout crew. There will be an emphasis on complex woody habitat such as root wads in order to favor brook trout.

**Project Activities:**

- Beaver were removed under a contract issued by the Wisconsin DNR to a private contractor. Several beaver dams were also removed. Outcome: trout will move more freely up and down the stream. Water will not be warmed as much in ponds.
- All required permits and approvals have been obtained.
- A majority of the invasive trees and brush have been removed from the 20 acre parcel. Stumps and remaining logs have been piled for further disposition.
- As of today, we have logged over 630 volunteer hours of brushing, cutting, and removing invasive trees to prepare the site for habitat restoration work. This is in addition to 120 hours of setting up our monitoring regime and protocol developed by the newly created Kiap-TU-Wish citizen monitoring and evaluation team.
- Most of the required rock has been purchased and delivered to the river
- Kiap-TU-Wish volunteers led by chapter board member John Kaplan have installed monitors at key locations along the project site and have been measuring stream conditions since spring.
- Chapter Volunteer coordinator, Randy Arnold, is heading up even more volunteers for the building and installation of lunger structures and root wads, along with seeding and mulching as you are reading this report.

**Project Outcomes:**

- All work to this date has moved the project forward, but we are behind the original schedule. Work is progressing rapidly however, and should be completed this fall.
- Unexpected: the number of invasive box elder trees was underestimated. Therefore, the amount of volunteer labor for cutting, moving, and chipping was greater than expected. The amount of partner (Wisconsin DNR Trout Crew) labor to remove and pile stumps was greater than anticipated. The number of acres of riparian corridor that has been opened to sunlight has not yet been measured but is nearly the entire 20 acre parcel.
- Unexpected: The WI DNR had major budget cuts. This hampered any initial effort to install monitoring equipment and measure aquatic invertebrate. Kiap-TU-Wish responded by creating it's own citizen monitoring team. A record wet spring and high water inhibited the team from doing a baseline invertebrate sampling in 2013, but will do so in spring of 2014. Monitoring and post-restoration evaluations are planned to continue through 2017.
- Pre-project temperatures have been recorded, stream measurements and transients taken, and WI DNR will be providing additional data as soon as it is verified and scored.

**Funding:**

Funding has been secured via grant pledges and donations from private, corporate and governmental organizations. Specific quantity of funding from each partner varies from the original plan, but the total amount of partner funding received and remaining pledges has fully funded this project. See following pages for allocations and budget.

Fairmount Minerals (volunteer labor, cash) \$55,563	TU Embrace-A-Sream \$5,000
Guadalupe Chapter of TU \$2,000	Volunteer labor (other) \$1,918
James E. Dutton Foundation \$8,000	WI DNR (in-kind and labor) \$14,280
Kiap-TU-Wish (volunteer labor, cash) \$24,447	WI DNR River Grant \$25,000
National Fish and Wildlife Foundation \$39,750	WI DNR Trout Stamp \$41,246
Patagonia \$5,000	WI TU Friends \$2,000
Pierce County LCD (in-kind and labor) \$7,762	Xcel Energy \$10,000
Trout and Salmon Foundation \$3,000	The Zephyr Foundation \$1,720
TU DARE ( monitor equipment donation) \$1,500	

**Looking forward:**

We anticipate the current project to be completed on schedule by fall 2013. A final report will be issued in December to satisfy grant reporting requirements. A post-project follow-up will be issued in 2016-17.

For 2014, we have decided to do a similar project immediately downstream from the current work. That next stretch is abandoned pasture with only a few trees to be removed. It has banks that are eroding, but they are not as high as those in the current project site. Grant applications and other partner contact are now beginning.

**[Project Evaluation & Monitoring]**

Both the Wisconsin DNR and Kiap-TU-Wish have agreed to conduct pre and post-project evaluations at this site. Pre-restoration baseline data will be compared with data from post-restoration work to evaluate the effectiveness of the restoration efforts. Pre-project catch-per-unit effort measured trout densities during and a Coldwater Fish Index of Biotic Integrity during the summers of 2010-2013 with post evaluation planned for 2014-2017. Comparisons will be made to determine if Brook Trout density goals were achieved. Pre-project habitat restoration data will be collected including temperature, flow, bank erosion, macrophyte coverage and percent of fine sediment.

A baseline Index of Biotic Integrity (IBI) sampling was scheduled to be conducted within the stretch of stream in the project area in spring of 2013 by the WDNR. Due to WDNR cutbacks and budget constraints, this activity did not take place. They have provided pre-restoration numbers for trout only at this point. In response, Kiap-TU-Wish created a volunteer team for citizen monitoring and evaluation in the project area. A record wet spring and high water inhibited the team from doing a baseline invertebrate sampling in 2013, but will do so in spring of 2014. Monitoring and post-restoration evaluations are planned to continue through 2017.

Kiap-TU-Wish will be submitting monitoring reports through 2017 as they become available. A post-project report will be issued in 2017.

**Recommended evaluation efforts to continue are:**

- No. of brook trout/aquatic species per mi.
- No. of young of the year brook trout
- Index of Biotic Integrity score
- Thermal regime and stream flow (5 years)

BEFORE RESTORATION



RESTORATION START



"Restoration of this stretch of stream will result in restoring natural reproducing trout populations, improved fishing access and fishability."

~Marty Engel, WDNR Fisheries Biologist



**WORK PLAN** | Trimbelle River Headwaters Restoration Project "Bring Back the Natives"

**Schedule for Trimbelle project below Pierce County Hwy W (WDNR station X) REVISED**

October 2012 to May 2013	June 2013	July 2013	August 2013	Sept.- December 2013
Endangered Resources Review Documentation	Kiap-TU-Wish volunteers Initiate monitoring protocol	WI DNR Trout Crew begins bank work	Bank work continues	Bank work completed
Chapter 30 permit	Rock is ordered and delivered	Publicity continues	Volunteers build LUNKER structures	Seeding and mulching of banks continues
US Corp of Engineers Permit	Publicity continues		Placement of LUNKER structures	Final work wraps up
Review by State Historic Preservation Office (SHPO)			Seeding and mulching of banks	Final reports generated
Tribal Preservation Office (THPO)			Publicity continues	Participants, Funders, and local community are thanked
Local county zoning office courtesy notice				Final publicity summing up project is issued
Initial contact with schools				
Contact sportsman's clubs				
Initial publicity begins				

The first plunge pool installed at the headwaters of the Trimbelle



DARRYL HENNING

**INTERIM PROJECT BUDGET AND COST ALLOCATIONS**

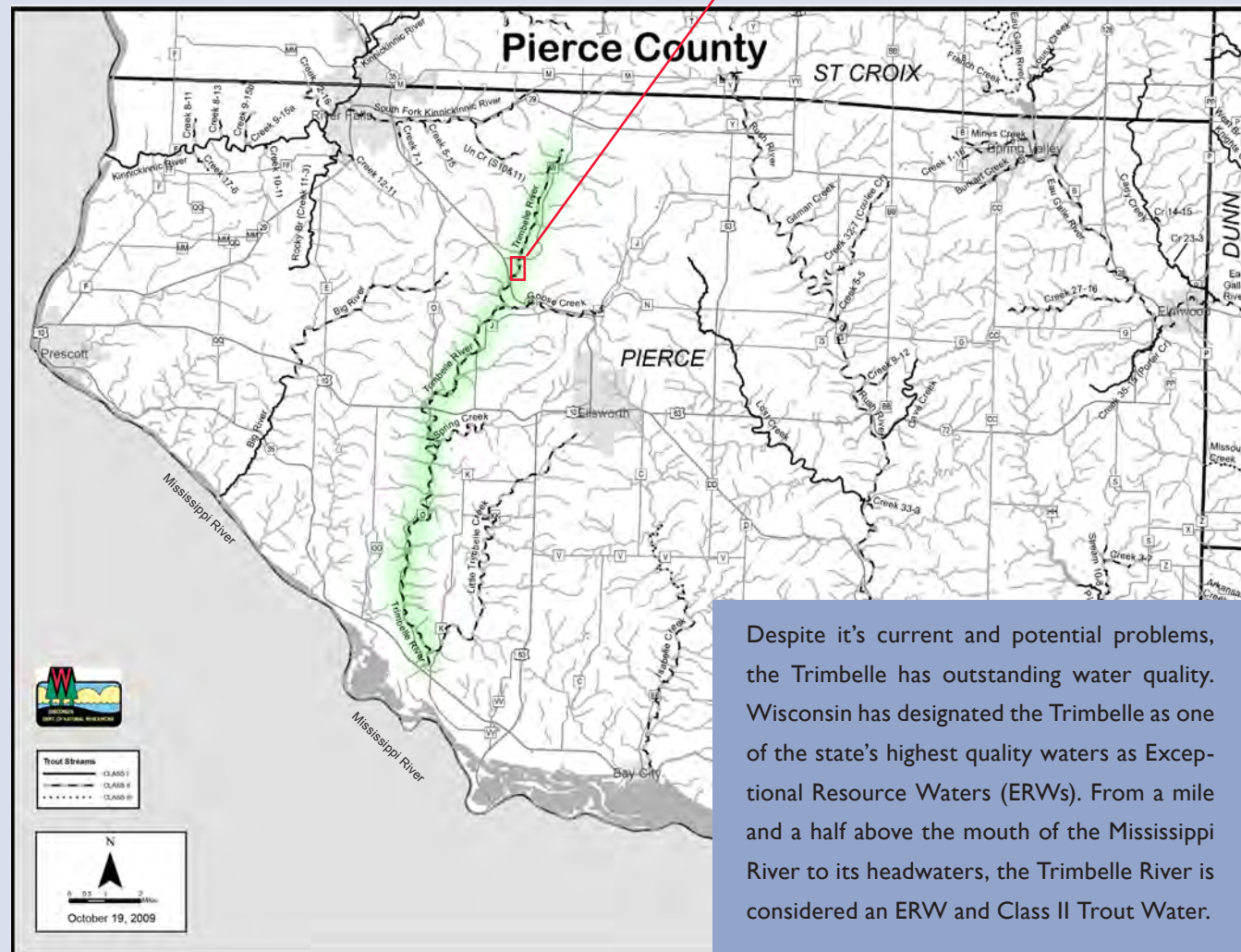
Item	Hrs./Qty	Contribution	Name of Contributor	Subtotals
<b>Paid Personnel / Consultants / Contractors</b>				<b>\$14,280</b>
WI DNR Personnel @ \$29 /hr:	430 hrs.	\$12,180	Wisconsin DNR	
WI DNR Transportation	-	\$2,100	Wisconsin DNR	
<b>Fed/State/Local Gov't - In-Kind Labor \$21.79/hr</b>				<b>\$872</b>
Topographical surveying /On-site inspection/etc.	40 hrs.	\$872	Pierce County, WI LCD	
<b>Kiap-TU-Wish Volunteer Labor \$21.79/hr</b>				<b>\$23,179</b>
Site preparation, remove brush, 1,150 alders	600 hrs	\$13,074	Kiap-TU-Wish Chapter TU	
Install/build LUNKER Structures/root wads	150 hrs	\$3,568	Kiap-TU-Wish Chapter TU	
Seeding and mulching	130 hrs	\$2,833	Kiap-TU-Wish Chapter TU	
Volunteer habitat monitoring	170 hrs	\$3,704	Kiap-TU-Wish Chapter TU	
<b>Other Volunteer Labor \$21.79 / hr</b>				<b>\$8,891</b>
Site prep, remove brush, alders, seeding	320 hrs	\$6,973	WI Industrial Sand Volunteers	
Site prep, LUNKERS, root wads, post	8 hrs	\$174	Ellsworth Rod & Gun	
Site prep, LUNKERS, root wads, post	40 hrs	\$872	Twin Cities TU	
Site prep, LUNKERS, root wads, post	40 hrs	\$872	Boy Scouts of America	
<b>Materials Purchases</b>				<b>\$100,743</b>
Rock rip-rap @\$8/ton	7,466 T	\$8,000	James E. Dutton Foundation	
		\$6,890	Pierce County	
		\$14,750	National Fish and Wildlife Foundation	
		\$25,000	WI DNR River Grant	
		\$5,000	Patagonia	
		\$88	Kiap-TU-Wish Chapter TU	
Contract Hauling @82.50 per load	414	\$25,000	National Fish and Wildlife Foundation	
		\$5,000	TU Embrace-A-Steam	
		\$3,000	Trout and Salmon Foundation	
		\$1,155	Fairmount Minerals (WI Industrial Sand)	
LUNKERS STRUCTURES @ \$90each	54	\$2,000	Guadalupe River Chapter of TU	
		\$1,000	Fairmount Minerals (WI Industrial Sand)	
		\$1,860	Zephyr Foundation/Kiap-TU-Wish	
Bales straw mulch @ \$2.50 each	400	\$1,000	WITU "Friends" Grant	
BLM#4Grass seed @ \$2.22 lb.	450	\$1,000	WITU "Friends" Grant	
<b>Equipment Operation/ Donations</b>				<b>\$31,340</b>
CAT320 Excavator @ \$98/hr	90	\$8,820	WDNR Trout Stamp, SFR, CCA	
Komatsu 200 Excavator @ \$98/hr	90	\$8,820	WDNR Trout Stamp, SFR, CCA	
Komatsu D61 Dozer @ \$90/hr	90	\$8,100	WDNR Trout Stamp, SFR, CCA	
Komatsu Tracked Utility @ \$90/hr	50	\$4,500	WDNR Trout Stamp, SFR, CCA	
Komatsu D45 Skid Steer @ \$55/hr	20	\$1,100	WDNR Trout Stamp, SFR, CCA	
<b>Addl Equipment Lease per month/fuel</b>				<b>\$27,546</b>
CAT320 Excavator @ \$98/hr	90	\$8,820	Fairmount Minerals (WI Industrial Sand)	
Komatsu 200 Excavator @ \$98/hr	90	\$8,820	Fairmount Minerals (WI Industrial Sand)	
Komatsu D61 Dozer @ \$110/hr	90	\$9,906	WDNR Trout Stamp, SFR, CCA	
<b>Taxonomic Lab and Monitoring</b>				<b>\$7,540</b>
IBI Lab Work and Taxonomic id		\$5,000	Fairmount Minerals (WI Industrial Sand)	
Steam Monitoring (monitors/software)		\$2,540	TU DARE/Kiap-TU-Wish Chapter of TU	
<b>PROJECT TOTALS</b>	<b>Funding</b>	<b>\$214,391</b>	<b>Estimated Project Cost</b>	<b>\$214,391</b>

NOTE: This is revised budget based on secured funding for this project (subject to change based on final expenses). Final expenses and allocations will be reflected on final report in December.

**[Project Area Maps and Photos]**

At the project site, the Trimbelle suffers from excessive sedimentation, bank erosion and elevated water temperature in some areas. The site is overgrown with invasive tree species, and sedimentation from bank erosion covers desirable coarse substrate reducing stream productivity, aquatic insect life and spawning substrate. A wide, sluggish, stream channel with slow current causes elevated water temperature downstream.

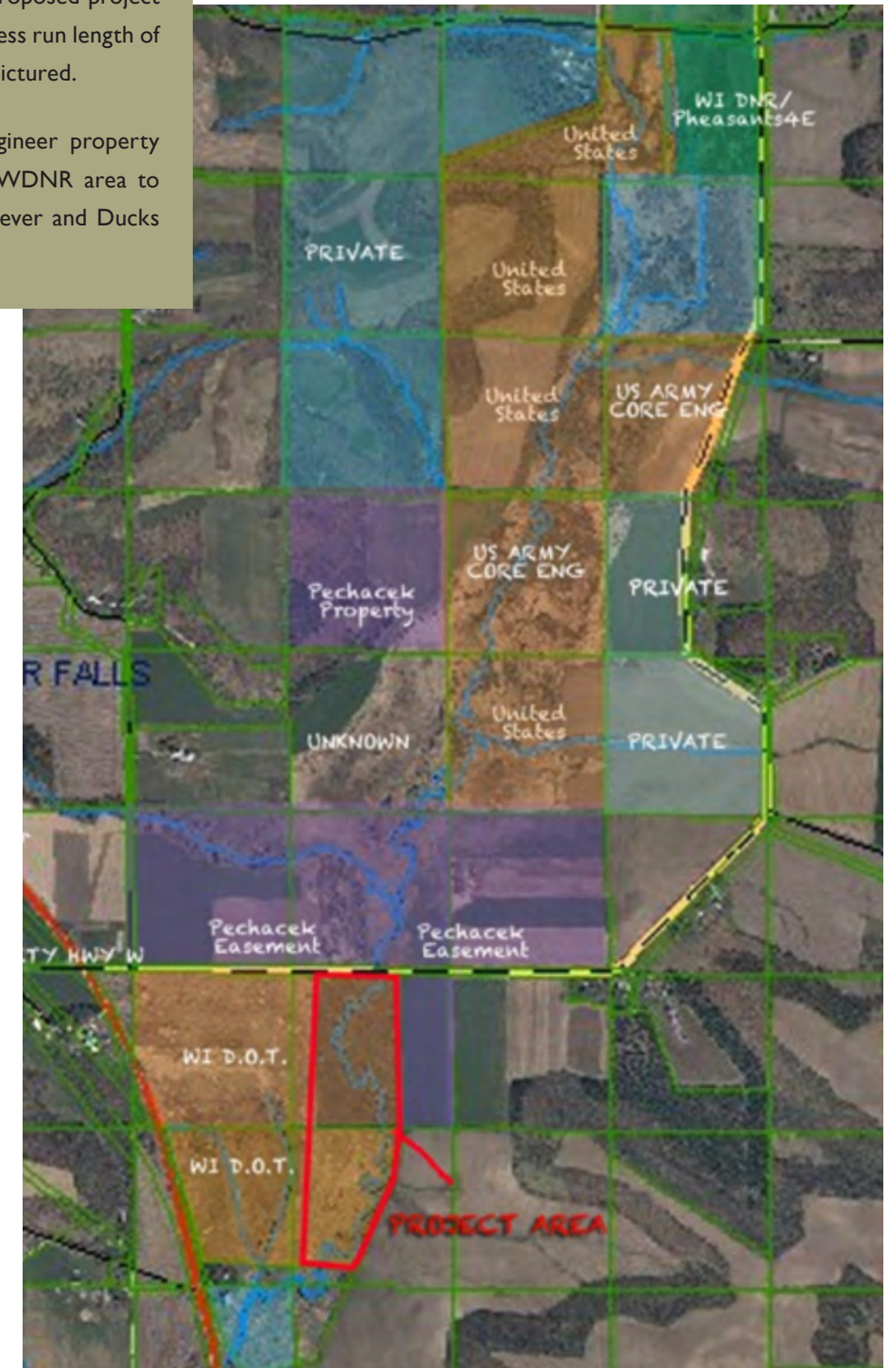
The Wisconsin Department of Transportation has ownership of the land at the project location and there are DNR easements adjacent and above the project area. The land is accessible to the public for a variety of recreational uses.



Despite its current and potential problems, the Trimbelle has outstanding water quality. Wisconsin has designated the Trimbelle as one of the state's highest quality waters as Exceptional Resource Waters (ERWs). From a mile and a half above the mouth of the Mississippi River to its headwaters, the Trimbelle River is considered an ERW and Class II Trout Water.

Adjacent land ownership of proposed project site. Public easements and access run length of this stream section corridor pictured.

Notice Army Corp of Engineer property above project area and the WDNR area to the north that Pheasants Forever and Ducks Unlimited worked on.





[ ABOVE LEFT ] Volunteers prepare site area by removing box elders and other invasive species with chain saws and muscle.

[ ABOVE RIGHT ] Volunteers measure stream transits and prepare for installation of monitoring equipment.

[ BOTTOM ] Laying down seed, straw and mulch on the first section that was restored.

[ OPPOSITE PAGE: TOP ] The heavy equipment and rock was brought in to start restoration on the first section of the project.

[ OPPOSITE PAGE: BOTTOM ] Volunteers continue with mulching and LUNKER structures are being built for installation within a few days.



## KIAP-TU-WISH BOARD OF DIRECTORS | 2013

### **Tom Henderson** | Chapter President,

Tom has been involved with restoration work on Pine Creek, Parker Creek, Plum Creek, and the Trimbelle River in Pierce County, Wisconsin. Has planted several thousand seedling trees in a reforestation project on his private land in northern Minnesota.

Over the years Tom's Career has been a mathematics and physics teacher, manufacturing engineer, quality engineer, and quality manager. Most of his career in manufacturing involved pollution control equipment for automobiles. During later years in the medical device industry, was part of a team that was granted a patent for an improvement to a battery that is used in pacemakers.

#### Education:

Bemidji State College | B.S. degree in Mathematics and Physics  
Colorado State College | M.S. degree in, Mathematics  
University of Minnesota | B.S. degree in Mechanical Engineering

#### Civic/Professional Memberships:

Past Local Lions Club President  
Past Church Council President  
Past Curling Club Treasurer  
Past Volunteer fireman  
Brown's Creek Watershed District citizens advisory board.  
Trout Unlimited

### **Dr. Hans Jung** | Chapter VP, Project Committee Chair

#### Professional Experience:

Research Animal Scientist, USDA-Agricultural Research Service - Plant Science Research Unit, St. Paul, MN and U.S. Dairy Forage Research Center, Madison, WI Cluster from 1986 to 2011 (retired); U.S. Meat Animal Research Center, Clay Center, NE 1982-1986.

Adjunct Professor, Departments of Animal Science, and Agronomy and Plant Genetics, University of Minnesota, St. Paul from 1986 to present.

#### Education:

University of Illinois, Urbana | Ph.D. degree in animal science  
University of Illinois, Urbana | M.S. degree in ecology  
University of California, Davis | B.S. degree in wildlife biology

#### Honors and Fellowships:

OECD Travel Fellowship for collaborative research at the Swedish University of Agricultural Sciences, Uppsala, Sweden

Sabbatical in the Department of Agronomy at Wageningen University, Wageningen, The Netherlands, 1996-1997.

American Dairy Science Association Pioneer Hi-Bred Forage Award

OECD Travel Fellowship for collaborative research at CSIRO Livestock Industries, Perth Australia

#### Civic/Professional Memberships:

Trout Unlimited

### **Allison Jacobs** | Chapter Secretary

Allison is currently serving as the chapter secretary. She has been involved with the Kiap-TU-Wish chapter of Trout Unlimited for more than 15 years. She has participated in several volunteer projects, including stocking trout fry and assisting with fishing clinics. As a junior in college, she completed a project that addressed the impact of climate and environmental changes on Lake Superior coaster brook trout.

Allison graduated from the University of Minnesota Duluth in 2007 with a degree in English. She has been employed since 2010 by Integrity Medico-legal Enterprises, where she works as an intermediary between clients and medical practitioners.

### **Gary Horvath** | Chapter Treasurer

Gary has been a chapter member since 1987. Serving on the Board of Directors in 1989 until becoming Vice-President in 1992. In 1995 he was elected as chapter President. In 2001, Gary became the Chapter Secretary. Gary's time as Secretary was interrupted by an additional two years as President.

During Gary's time with Kiap-TU-Wish, he has worked on the passage of the River Falls stormwater ordinance; removal of the Mounds Dam on the Willow River; Implemented the River Falls Fly-fishing clinic; and installation of the Willow River Monitoring station.

Employed by the MN Department of Agriculture as the Director of the Laboratory Services Division. Gary's technical direction and oversight to the chemical and biological programs and allocated the resources required to produce quality data. These positions provide administrative and technical direction to meet the department's data quality objectives for the regulatory oversight of agricultural products, industries, environmental and food safety and security.

#### Education:

University of Wisconsin Stevens Point  
B.S. degree, Water Resources, Chemistry Civic/Professional Memberships:  
Trout Unlimited

### **Bob Trevis** | Chapter Director

Newly retired from 20 years of printing sales, with previous 25 years spent in marketing communications positions. Bob has a degree in Photojournalism from the University of Minnesota, with a Zoology minor. Post-graduate courses in marketing and sales.

He is also a member of Trout Unlimited, and a Part-time guide for Troutchasers Guiding Service.

Consistent volunteer/instructor for fly-fishing or fly-tying events, including Women in the Outdoors, FFF seminars, Minnesota Fly Fishers classes Northwest Sports Show, and Great Waters Expo. Involved in stream restoration of Pine Creek and the River Falls Fly-Fishing class.

### **Robert Diesch** | Chapter Director

Owner and President of Engineering Testing System, Bob brings a skill set in an array of technologies including, dynamic analysis, fluid mechanics, stress analysis, finite element analysis, experimental stress analysis, heat transfer, hydraulics, materials science, analog and digital electronics).

#### Education:

University of Minnesota | BSME, with Distinction;  
Minnesota Management Institute, Graduate

#### Additional Training and Certification:

Registered professional Engineer (MN & WI), Thermographer, Advanced Problem-solving, Design of Experiments, Taguchi methods.

#### Civic/Professional Memberships:

Past chairman of Hassan Township Planning Commission  
MN Distinguished Engineer of the Year in 2011  
19 years member of ASME | Executive board member  
ASME chair 2009  
Vice President, MFESTS 2008 with emphasis on ASME participation  
Trout Unlimited

### **Greg Meyer** | Chapter Director, Communications, Grants

Greg will be grant writing and assisting in the outreach and publicity initiatives. He has a chapter member since 2002, and TU member since 1990. He has served as communications chair the past four years.

#### Professional Experience:

Greg currently is owner and Creative Strategy Director of Meyer Creative, LLC., and has worked as creative and marketing director for over 20 years. He has previously worked as Creative Director for Best Buy Co., Inc., and Director of Marketing for The RiverGroup Financial Services, along with other leadership positions.

He has also been a guest lecturer and adjunct professor at the Minneapolis College of Art & Design and Brown College.

#### Education:

University of Wisconsin-Oshkosh | B.F.A. in Graphic Communications

#### Professional Memberships:

Trout Unlimited  
American Advertising Federation  
American Marketing Association  
American Institute of Graphic Artists

### **Dr. Greg Olson** | Chapter Director

A Kiap-TU-Wish chapter member since 2008, he has worked on Parker and Pine Creek restoration.

#### Education:

UW-River Falls, BS Chemistry 1991  
Northwestern University, Ph.D. Organic Chemistry 1996.

Employment: 16 years at DiaSorin, an immunodiagnostic company, in Stillwater, MN. Currently, manager of the Organic Lab.

#### Civic/Professional Memberships:

Trout Unlimited  
American Chemical Society

### **Tom Schnadt** | Chapter Director

Tom is our newest board member for Kiap-TU-Wish. Tom has been an integral part of our project work days in the past few years and has recently been given the chapter award for volunteerism.

#### Professional Experience:

Building Products Distribution 1978 to 2011 with Champion International, U.S. Plywood, Georgia-Pacific, BlueLinx (33 years of continuous employment with one company, the companies changed as a result of acquisitions) and Director of Sales for Agristrand 2/2012 to present. Agristrand is a start up company utilizing soy straw to make particleboard.

#### Education:

University of Minnesota | BS- Forest Resource Development  
College of Natural Resources

#### Honors and Awards:

BlueLinx President Award 2006  
Georgia-Pacific President Award 2000  
Georgia-Pacific Vice President Award 1993  
Champion International MVP 1980  
President, University of Minnesota CNR Alumni Association, 1986

#### Civic/Professional Memberships:

Trout Unlimited  
University of Minnesota Alumni Association

### **John Kaplan** | Chapter Director

A new board member in 2013, John has taken the initiative to be the chapter volunteer stream monitoring chair.

John is co-owner of Avalanche, Inc., a multi person manufacturers rep agency involved in supplying industrial components to manufacturing companies.

John has been a long standing member of TU, Kinnickinnic River Land Trust and DU.

Over the last few years John has been involved in restoration work on the Trimbelle and Parker Creek as well as volunteering with the DNR for their shocking program.

#### Education:

BA degree in Business / Marketing from the University of Montana in 1977.

#### Civic/Professional Memberships:

Trout Unlimited





**Kiap-TU-Wish Contact Information:**

Grant Writer/Reporting  
Greg Meyer  
Kiap-TU-Wish Board Member

t :: 651.271.9792  
e :: meyer-creative@comcast.net

Project Manager  
Tom Henderson  
Kiap-TU-Wish President

t :: 651.439.8418  
e :: tomhenderson136@comcast.net

Kiap-TU-Wish Chapter  
[www.kiaptuwish.org](http://www.kiaptuwish.org)

